



SILOTRONIC

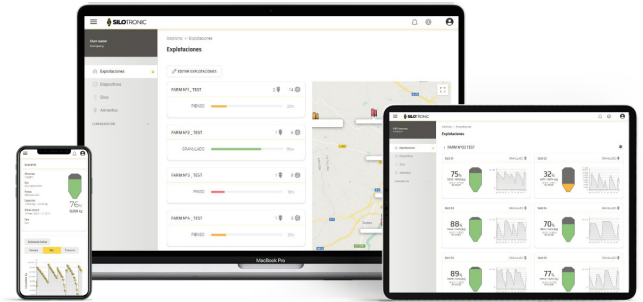
SILOS LEVEL CONTROL IN
REAL TIME



Sensor with laser technology to measure the content level of silos in farms.

Rotecna's Silotronic is a sensor with laser technology that allows you to know, in real time and from anywhere, the level of feed available in the facilities.

This solution improves employees' safety by avoiding visual control from the top of the silos. Likewise, it helps to optimize feed distribution routes and times, reducing transport costs and minimizing the return of product surplus.

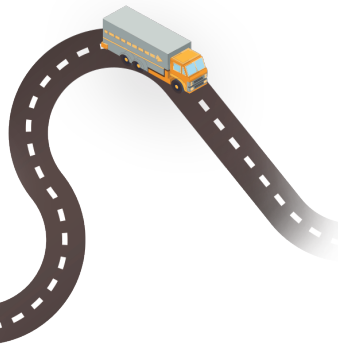


WWW.SILOTRONIC.FARM



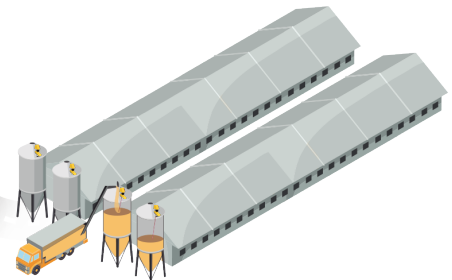
PRODUCT LEVEL CONTROL

- Real time product level monitoring.
- Better forecasting and production control.



LOGISTICS OPTIMIZATION

- Programming of distribution routes.
- Reduction of transport costs.
- Avoid the return of surplus product.



CONTROL SYSTEM FOR FARMS

- Reading of levels for solid products.
- Improves employees' safety as there is no need to climb the silos.
- Comprehensive control of your supplies of feed, pellets, etc.

ADVANTAGES:

- Comprehensive customization of the platform: farms, users, geolocation, color coding.
- The new Silotronic allows its installation in silos with more degrees of inclination of the upper cone.
- User levels: dealer, company, and farmer.
- Electronics and batteries have a special compartment, guaranteeing the tightness of the electronics.
- Configuration of silos, feed, and sensors.
- Notification of alerts via email by type of product and / or silo, and control of anomalies by temperature, dirt, and battery level.
- Empty silo setting with tare function.

TECHNICAL DATA:

Measurement range	Up to 25 metres
Working temperature	From -20°C to 60°C
Sensor	Laser
Measurement	Scheduled every two hours. Customizable.
Type of communication	Radio frequency (also with internet connections)
Installation	Easy installation. No need for cables or switchboards
Communication range	Up to 500 m. in an open field